

**MUNICIPALITY OF THE
DISTRICT OF WEST HANTS
LAND USE BY-LAW**

**SCHEDULE A: V-1
BROOKLYN
VILLAGE**

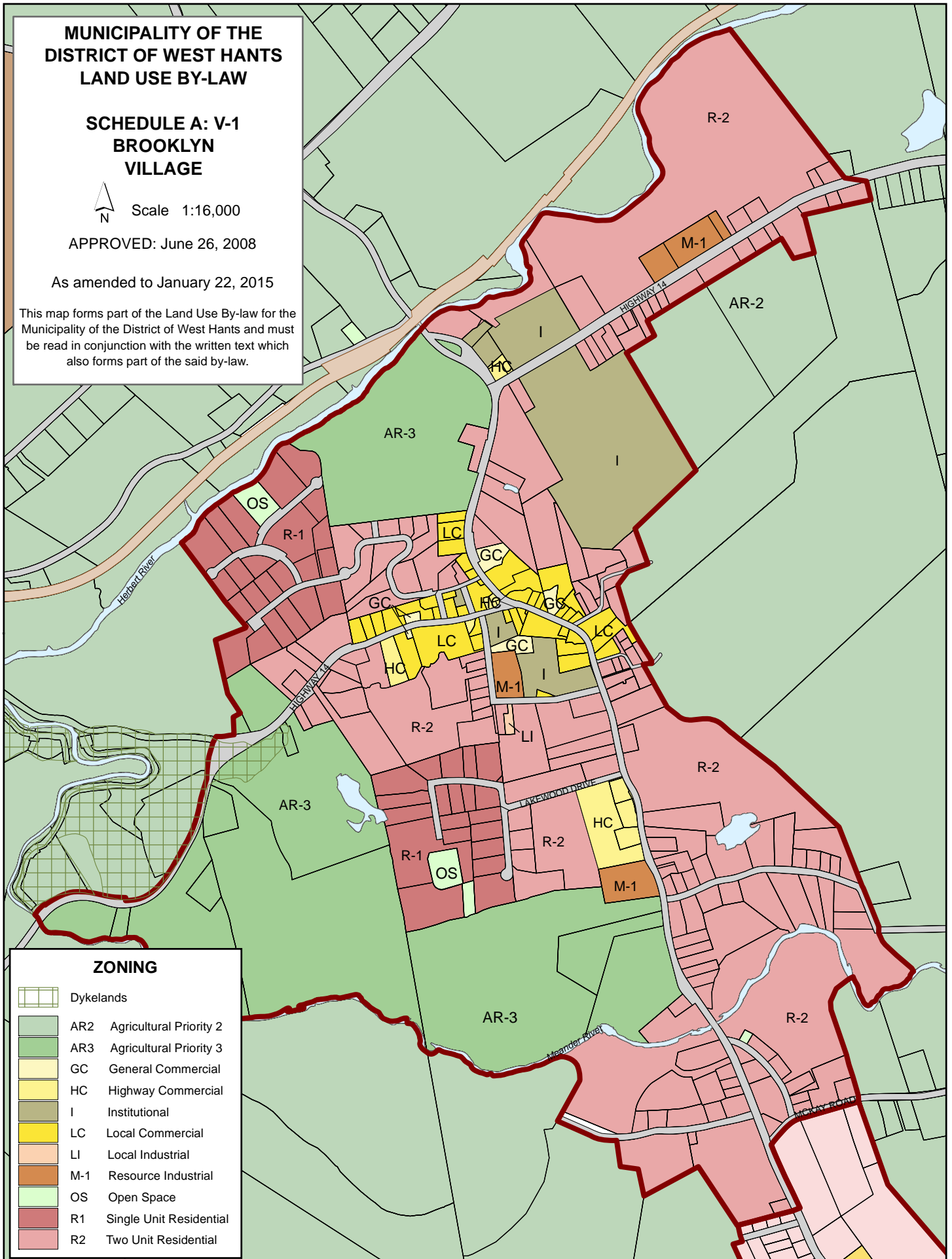


Scale 1:16,000

APPROVED: June 26, 2008

As amended to January 22, 2015

This map forms part of the Land Use By-law for the Municipality of the District of West Hants and must be read in conjunction with the written text which also forms part of the said by-law.



ZONING

	Dykelands
	AR2 Agricultural Priority 2
	AR3 Agricultural Priority 3
	GC General Commercial
	HC Highway Commercial
	I Institutional
	LC Local Commercial
	LI Local Industrial
	M-1 Resource Industrial
	OS Open Space
	R1 Single Unit Residential
	R2 Two Unit Residential